



深圳大学 医学部

SHENZHEN UNIVERSITY
MEDICAL SCHOOL

Overview of Shenzhen University Medical School

Xingzhi (Xavier) Xu, PhD, Professor, Executive Dean
Xingzhi.Xu@szu.edu.cn

The city is lovely!



Shenzhen: Facts and Figures

- China's 1st and most successful Special Economic Zone
- Population: 20 million; Area: 1,953 square kilometers; GDP in 2022: about US\$475 billion
- China's 3rd largest city economy; China's manufacturing, technology, trade and port city



Shenzhen University

- Shenzhen University, which was established in 1983, is the only comprehensive university affiliated with and fully supported by the Shenzhen Municipal Government.
- The 2021 overall Academic Rankings ranks Shenzhen University at 30th place in China.
- The NSFC funding of the Shenzhen University in 2021 ranks 15th.

SZU Medical School was established in Dec. 2008



Our motto



Caring & Skilful

Competent & Dedicated

Framework of the SZU Medical School

SZU Medical School

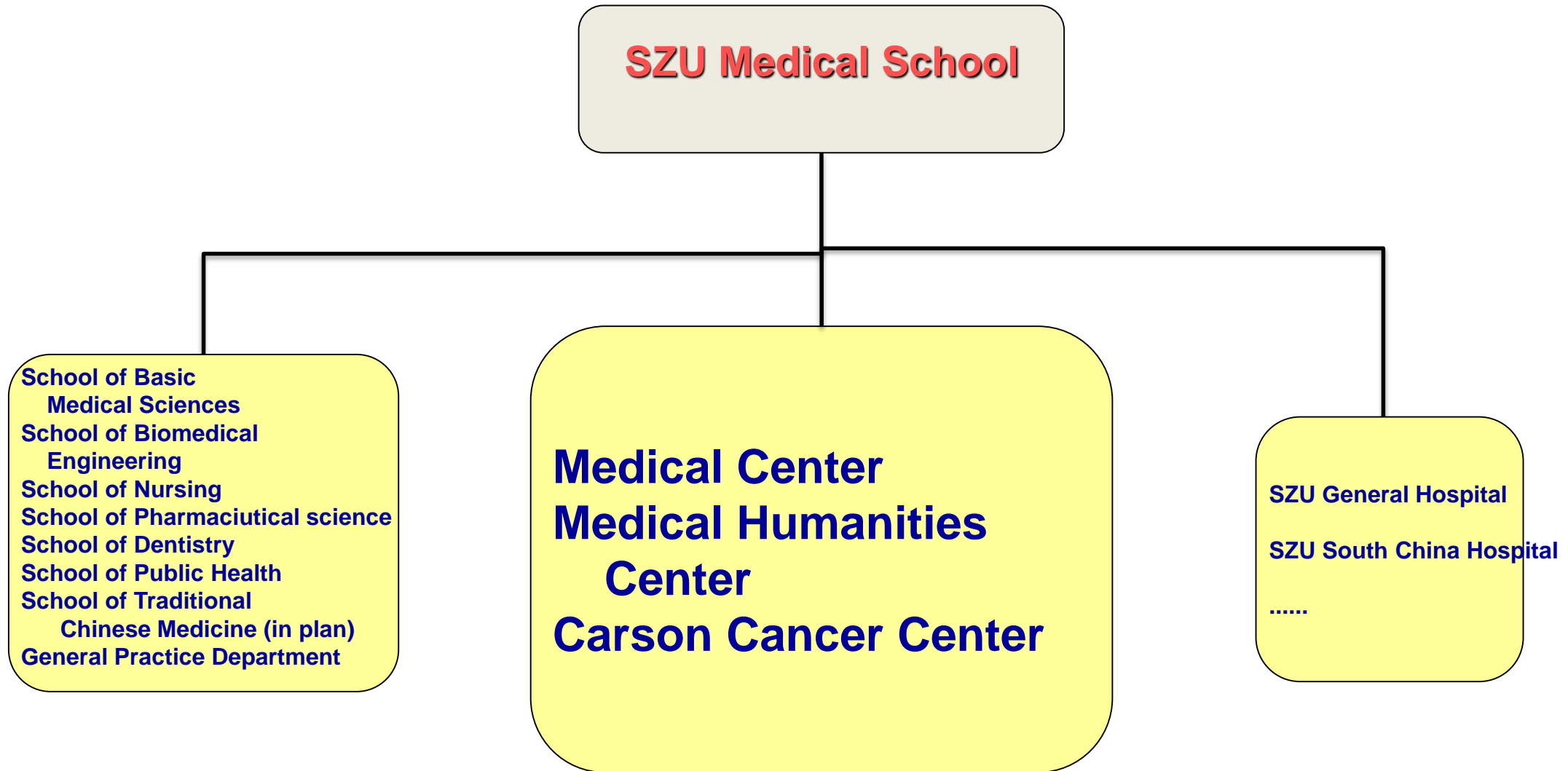
```
graph TD; A[SZU Medical School] --- B[School of Basic Medical Sciences]; A --- C[School of Biomedical Engineering]; A --- D[School of Nursing]; A --- E[School of Pharmaceutical science]; A --- F[School of Dentistry]; A --- G[School of Public Health]; A --- H[School of Traditional Chinese Medicine (in plan)]; A --- I[General Practice Department]; A --- J[Medical Center]; A --- K[Medical Humanities Center]; A --- L[Carson Cancer Center]; A --- M[SZU General Hospital]; A --- N[SZU South China Hospital]; A --- O[.....];
```

School of Basic Medical Sciences
School of Biomedical Engineering
School of Nursing
School of Pharmaceutical science
School of Dentistry
School of Public Health
School of Traditional Chinese Medicine (in plan)
General Practice Department

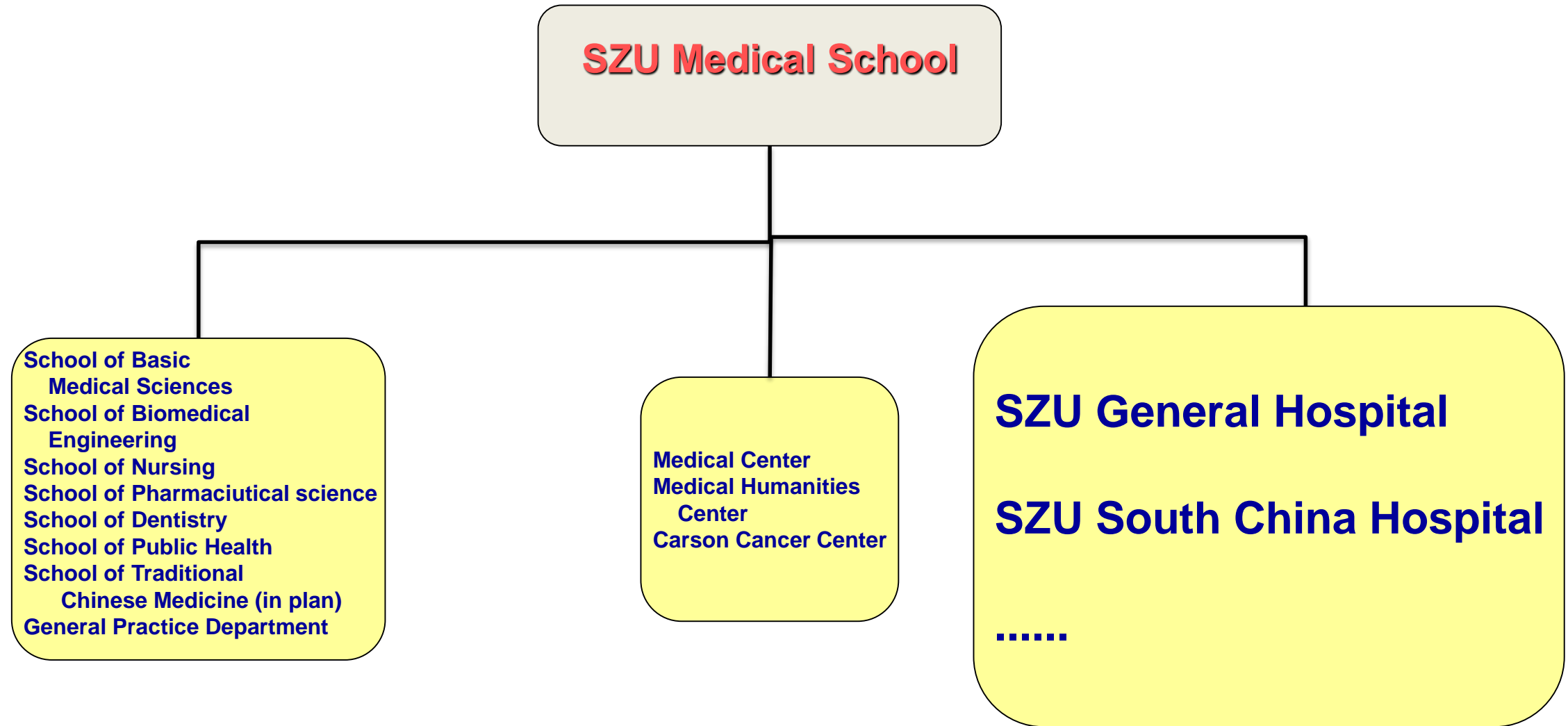
Medical Center
Medical Humanities Center
Carson Cancer Center

SZU General Hospital
SZU South China Hospital
.....

Framework of the SZU Medical School



Framework of the SZU Medical School



Bachelor Programs

SZU Medical School has an enrollment of 3,786 full-time students, which include 2,258 undergraduates, 1,528 graduates

Six Bachelor Programs (2022 freshmen: 576)

- Clinical Medicine (275)**
- Biomedical Engineering (105)**
- Pharmacy (63)**
- Dental medicine (34)**
- Public health (31)**
- Nursing (68)**

Master Programs

SZU Medical School has an enrollment of 3,786 full-time students, which include 2,258 undergraduates, 1,528 graduates

- **Two MSc Programs**
 - **Biomedical Engineering**
 - **Basic Medical Sciences**

Master Programs

SZU Medical School has an enrollment of 3,786 full-time students, which include 2,258 undergraduates, 1,528 graduates

- **Four Professional Master Programs**
 - **Biomedical Engineering**
 - **Clinical Medicine**
 - **Pharmaceutical science**
 - **Public health**

PhD Programs

SZU Medical School has an enrollment of 3,786 full-time students, which include 2,258 undergraduates, 1,528 graduates

- **PhD program in biomedical engineering since 2018**
- **PhD program in biology since 2022**
- **SZU-FSU joint PhD program in biomedical sciences since 2017**
- **International PhD program in Biomedical Engineering (Medicine/Engineering) since 2017**
- **International PhD program in biology since 2022**

Graduate students: 600 students admitted in 2022

Outstanding and international faculty members (180+)

Academicians



Baoguo Jiang

Member of the Chinese Academy of Engineering, NSFC Outstanding Youth Scientist, Chief scientist of the National 973 Projects, Model workers in the National health system, top scholar in trauma and neuroregeneration



Xueji Zhang

Member of the American Academy of Medicine and Biological Engineering, the Royal Society of Chemistry, the Russian Academy of Engineering, Chief scientist of national major R&D projects, Vice President of Shenzhen University



Rui Wang

Member of the Chinese Academy of Engineering and the Chinese Academy of Medical Science, NSFC Outstanding Youth Scientist, top scholar in peptide drug development



Dennis A. Carson

Member of the National Academy of Sciences, Medicine, Engineering and Inventors, "Thousand Talents Program" expert, top scholar in cancer immunology research field.

NSFC Outstanding Youth Scientists



Baoguo Jiang



Wei-Guo Zhu



Xinchun Chen



Rui Wang



Yongxian Cheng



Baohua Liu

About 61% of the faculty in SZU Medical School have overseas study or working experience

Member of the National Academy of Sciences, Medicine, Engineering and Inventors

National "Thousand Talents Program" experts

NSFC Outstanding Youth Scientist awardees

Distinguished Professors

International Faculty members

We have recruited and maintained teams of internationally competitive scholars in biomedical research

Prof. Dr. Baoguo Jiang:

- Dean, SZU Medical School
- A member of the Chinese Academy of Engineering
- The NSFC Outstanding Young Scholar
- Chair , the Traumatology Branch of the Chinese Medical Association
- Excellence in trauma & neuroregeneration



Prof. Dr. Wei-Guo Zhu:

- A world-leading scientist in epigenetic research
- Winner of the NSFC Outstanding Young Scholars
- Chief Scientist of NSFC Innovation Team
- leader of “973” and “863” projects.



Prof. Dr. SHUNICHI TAKEDA

- Changjiang Chair Distinguished Professor
- Chair of the Department for Radiation Genetics at the School of Medicine, Kyoto University (1998-2021)
- Focus on the molecular mechanisms underlying the radiotherapy and chemotherapy of malignant tumors, using a reverse genetics approach

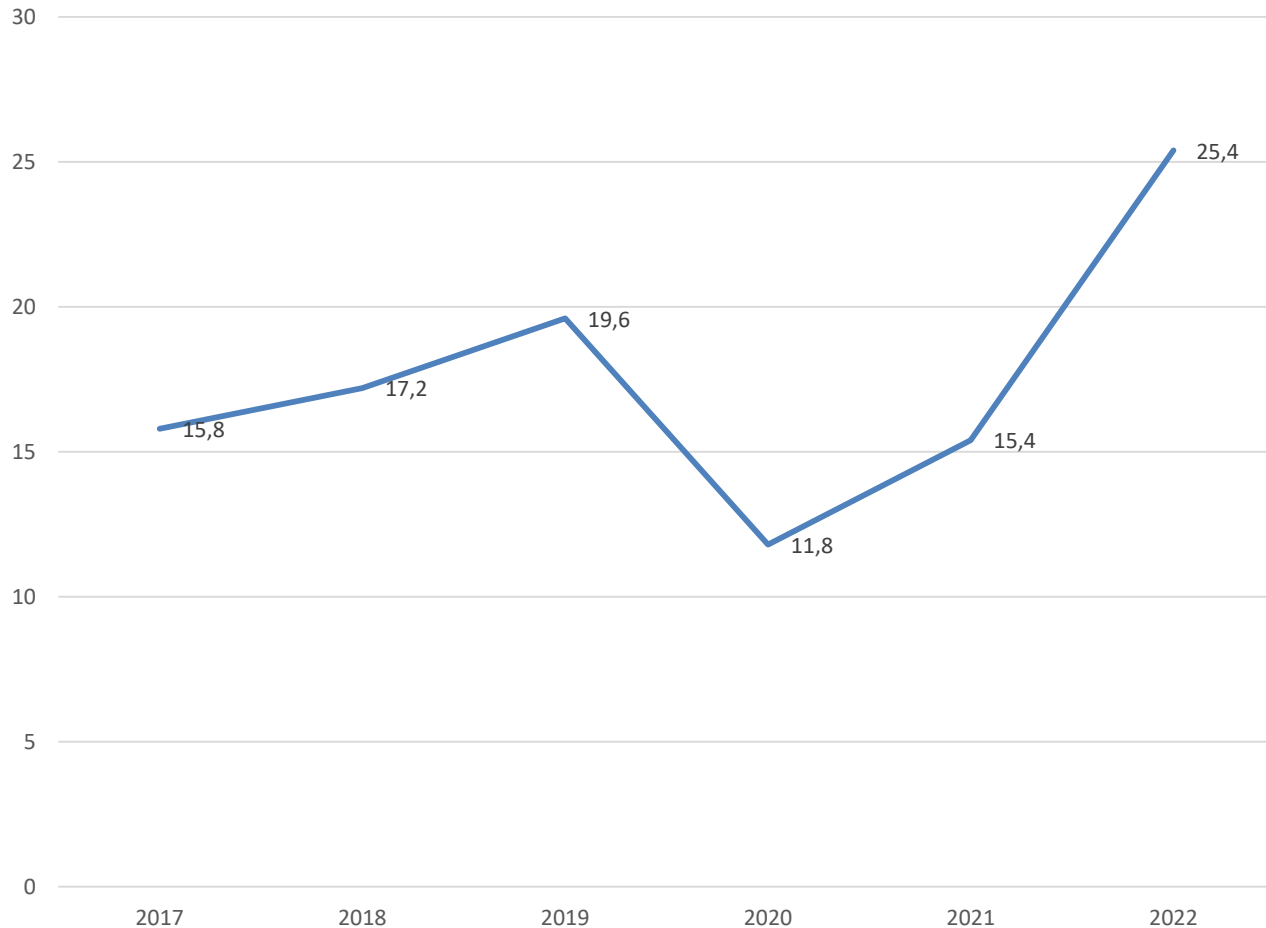


Prof. Dr. Dennis A. Carson :

- Member of the National Academy of Sciences, Medicine, Engineering and Inventors
- “Super Thousand Talents Program” expert
- top scholar in cancer immunology research field.



Excellent funding records



External grant funding:

- 2016: 10 million \$
- 2017: 15.8 million \$
- 2018: 17.2 million \$
- 2019: 19.6 million \$
- 2020: 11.8 million \$
- 2021: 15.4 million \$
- 2022: 25.4 million \$

International Competitive Research Teams



trauma &
neuroregeneration



Genome
homeostasis



Infection &
Immunity



In vitro
Diagnosis



Smart
Biosensing

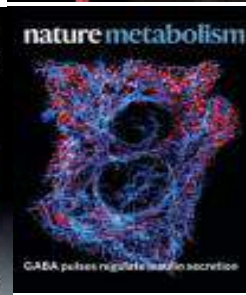
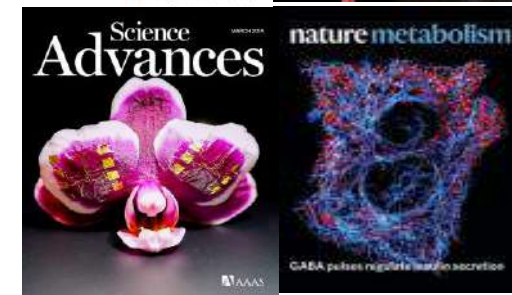


Molecular
Imaging



Chemical
biology

- **Sisi Li:** Mechanism of siRNA production by a plant Dicer-RNA complex in dicing-competent conformation—**Science**, 2021
- **Wei-Guo Zhu:** SIRT7-mediated ATM deacetylation is essential for its deactivation and DNA damage repair—**Science Advances**, 2019
- **Baohua Liu :** SIRT7 couples light-driven body temperature cues to hepatic circadian phase coherence and gluconeogenesis—**Nature Metabolism**, 2019
- **Xingzhi Xu:** A 1,2,3-Triazole Derivative of Quinazoline Exhibits Antitumor Activity by Tethering RNF168 to SQSTM1/P62—**J Med Chem**, 2022
- **Peng Huang:** Theranostic multimodal gold nanoclusters—**Nat. Biomed. Eng.**, 2020
- **Zhiming Cai:** Directing cellular information flow via CRISPR signal conductors—**Nature Methods**, 2016



Excellent publication records

- **Faculty published a total of 4,732 papers in SCI indexed journals during 2016-2022.**
- **483 publications (first and/or corresponding authored) are PNAS equivalent or above**
- **79 of which are in Cell, Nature, Science and their sub-journals**

International Research & Medical Centers

➤ The Carson International Cancer Center in collaboration with the University of Southern California

Shenzhen University and Southern California University signed an agreement of joint development of the Carson International Cancer Center on 19th, Oct. 2016. The vice mayor of Shenzhen, Yihuan Wu attended and witnessed the signing ceremony.



SZU-FSU Joint PhD Program in Biomedical Science

University-wide collaboration between SZU and Jena University was signed in May 2016



SZU-FSU Joint PhD Program in Biomedical Science

- Agreement for establishing the SZU-Jena Joint Biomedical Science PhD Program was signed in Sept. 2016
- 26 PhD candidates were admitted into the program from 2017-2022
- 2 received doctorate degree in 2022



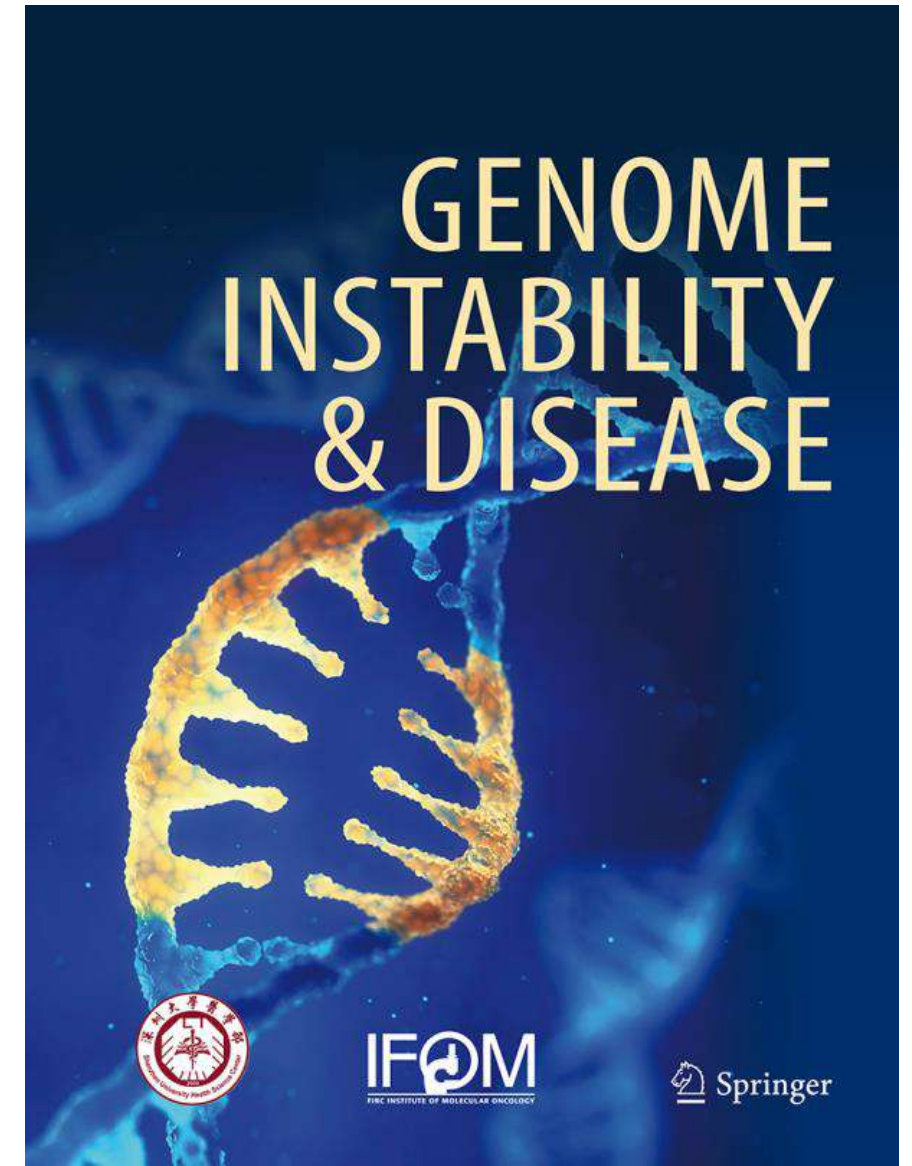
International PhD Programs in Biology and Biomedical Engineering

- **The program took in 2 PhD candidates and 2 MSc candidates in 2017; 5 MSc candidates and 7 PhD candidates in 2018; 11 PhD candidates in 2019; 20 PhD candidates in 2020; 9 PhD candidates in 2021; 4 PhD candidates in 2022; 1 PhD candidate in Spring 2023.**

Genome Instability & Disease (GIAD)

- **Joint journal with IFOM and the Springer Nature Press**
- **Focus on genome instability and its associated disease**
- **Editors in chief: Wei-Guo Zhu, Marco Foiani**
- **Editorial board: international scholars**
- **Launched in 2020**

<https://www.springer.com/journal/42764>



The SZU General Hospital

(800 beds, Jun. 2018; Phase II 600 beds, 2025)



SZU South China Hospital

2000 beds, Sept. 2021



Affiliated hospitals (24)

The Shenzhen University General Hospital

Shenzhen University SouthChina Hospital

The First Affiliated Hospital of SZU- Shenzhen Second People's Hospital

The Second Affiliated Hospital of SZU- Shenzhen Third People's Hospital

The Third Affiliated Hospital of SZU- Shenzhen Luohu People's Hospital

SZU Affiliated Nanshan Hospital- Shenzhen Sixth People's Hospital

The School of Ophthalmology, SZU-Shenzhen Ophthalmic Hospital

The School of Mental Health, SZU-Shenzhen Kangning Hospital

Shenzhen Sun Yat-sen Cardiovascular Hospital

Shenzhen University Maternity & Child Healthcare Hospital

SZU Affiliated Otorhinolaryngology Hospital

Shenzhen Bao'an District Shajing People's Hospital

Medical School campus in 2017

Phase II in 2026 with an addition of 110,000 m²



Overall Goal: To build a top medical school

GOAL



Leading Shenzhen medicine



Building up reputation worldwide



**Exploring pathways for excellence in
medical school growth guided by science
& technology innovation**

International PhD programs in biology and biomedical engineering are now enrolling!

- <https://www.nature.com/>
- Studentship not less than US\$ 10,000 per year
- Excellent graduating undergraduates are welcome to apply

Requirements in detail

- A maximum of 20 PhD candidates will be enrolled in September 2023
- Be fluent in written and spoken English
- Hold a Bachelor's (for Biology program only) or Master's degree in a biological sciences discipline with a GPA in the top 30% of class from a top 400 QS ranking university, or with a GPA in the top 10% of class from a 401-700 QS ranking university
- Any SCI publications is a plus
- A generous scholarship to cover all research costs, tuition fees, and work-related travel, as well as stipend not less than \$10,000 USD/year

Summer school

- One week, mid of July
- 20 students
- Junior students
- Fully financial support

Research camp

- One semester
- Junior or senior students
- 10-20 students
- Fully financial support

How to apply

- For the PhD program, please follow instructions described in the following link: <https://www.nature.com/> or contact our official coordinator

- *MPH, Ph.D. candidate Aima Adylova (Ima)*

Co-Founder & CEO at "Da Vinci Editing"

e-mail: ima_gem@hotmail.co.uk, ima@davinciediting.com

mob./WhatsApp [+7 775 106 96 29](tel:+77751069629)

website: www.davinciediting.org

- For summer school and research camp, contact Ima for application form, deadline for application is April 21st, 2023.

Thanks!

谢谢！

International Research & Medical Centers

**The SZU-Sydney University
Laryngosurgery & Voice
Rehabilitation Center with
generous support from the
Huaqiang Group**

深圳大学文件

深大校发〔2020〕72号

关于成立深圳大学-悉尼大学-华强集团 嗓音中心的通知

全校各单位：

经研究，决定成立深圳大学-悉尼大学-华强集团嗓音中心，
归属医学部管理。

特此通知。



Shenzhen University-Sydney University- Huaqiang Group Voice Center



Huaqiang Group donated 50 million RMB in Dec. 2020

Proposed joint activities in 2023 and beyond

**Undergraduate thesis research in SZU (3 months at least
and up to 1 year):**

Summer school for senior students: July 2023

**Faculty/student exchange: visiting scholar program (6
months at least and up to 2 years)**

Joint grant application: NSFC

Joint research centers/institutes

.....

Research Excellence

- **Trauma and neuroregeneration**
- **DNA damage response and genome stability**
- **Microbiology & infectious diseases**
- **Ageing**
- **Cancer research**
- **Metabolic Disorders**
- **Natural products as lead compounds for drug discovery**
- **Nanomaterials**
- **Medical equipment/ultrasound**